

Continuum of Care (CoC) means the group geographically organized to carry out responsibilities required under the Federal CoC Interim Rule and which is comprised of representatives of various organizations to the extent these groups are represented within the geographic area and are available to participate, including:

- Nonprofit homeless providers
- Victim service providers
- Faith-based organizations
- Governments
- Businesses
- Advocates
- Public housing agencies
- School districts
- Social service providers
- Mental health agencies
- Hospitals
- Universities
- Affordable housing developers
- Law enforcement
- Organizations that serve homeless and formerly homeless veterans
- Homeless and formerly homeless persons

CoC

Planning body for a defined geographic area; *Oregon includes 7 Continuums of Care; approximately 385 CoCs nationwide*

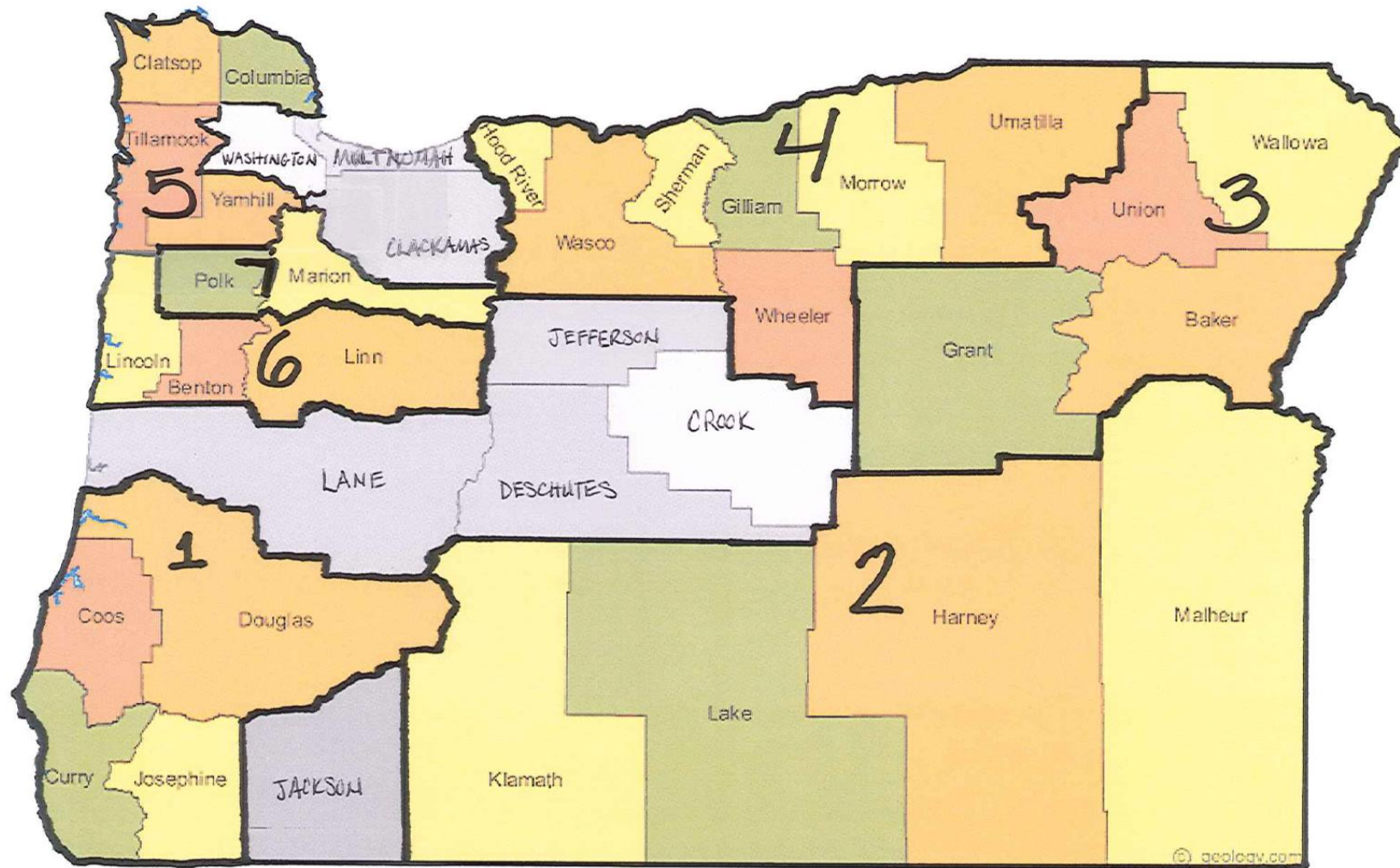
- Develop proactive solutions rather than reactive stop-gaps
- Coordinate targeted homeless resources and mainstream resources for a more efficient and effective system
- Identify common goals for advocacy and policy work
- Increase community “buy-in” and access to mainstream resources
- Establishes/operates a system to prevent/end homelessness for the defined geographic area
- Applies for CoC grants

CoC Program Interim Rule

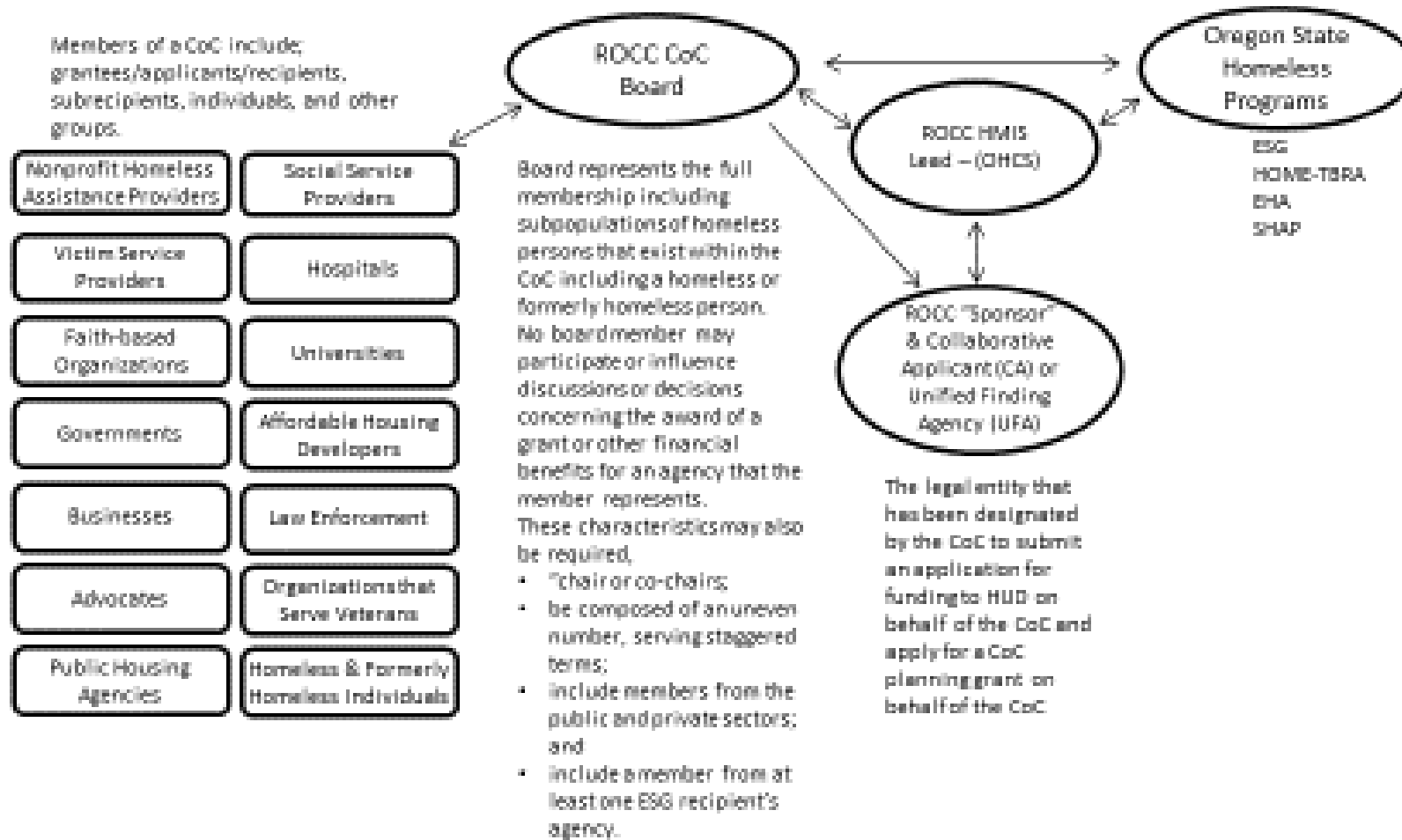
Implements the CoC Program; major provisions include how to establish and operate a CoC, how to apply for funds under the program, and how to use the funds for projects approved by HUD.

CoC Program

Funding for Permanent Housing (PSH/RRH), coordinated entry, HMIS, planning



ROCC Continuum of Care Flowchart



- 28 of Oregon's 36 counties
- Columbia, Clatsop, Tillamook, Yamhill, Polk, Marion, Linn, Benton, Lincoln, Coos, Douglas, Curry, Josephine, Klamath, Lake, Hood River, Wasco, Sherman, Gilliam, Wheeler, Morrow, Grant, Umatilla, Union, Baker, Wallowa, Harney, Malheur